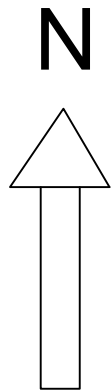
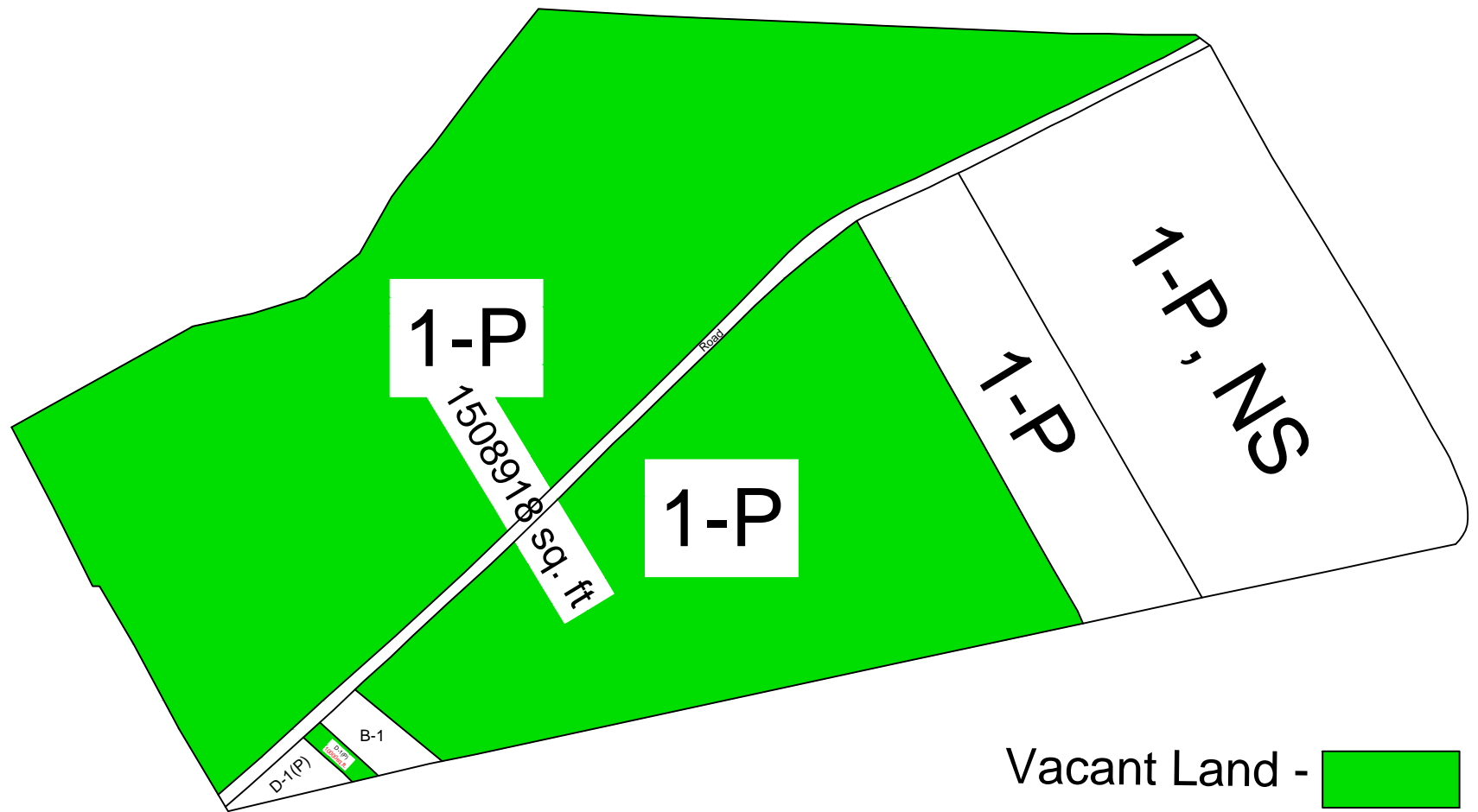


# INDUSTRIAL AREA BHEDIADANGI (KISHANGANJ)

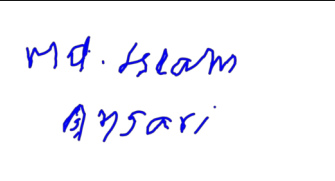
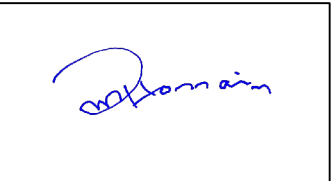
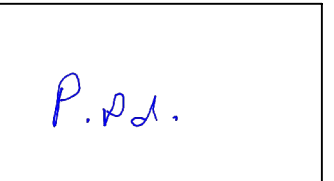
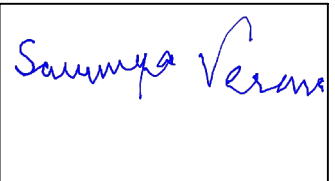
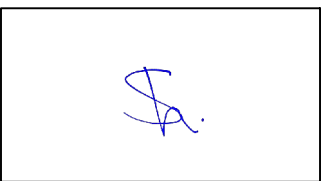
Total Area- 48.40 Acre



Bihar Industrial Area Development Authority				
Regional Office - Bhagalpur				
I.A. Bhediadangi				
Vacant land Details				
S. N.	Plot No.	Area (in sq. ft.)	Dimension	Remarks
1	1(P)	1508918	<b>Part-I (964263 sq. ft.)</b> North-1140'0" South-1250'0"+550'0"=1800'0" East-1010'0" West-660'0" <b>Part-II (544655 sq. ft.)</b> North-1161'0" South-1085'0" East-800'0" West-170'0"	Land received after cancellation & possession taken by M/S JK Laxmi cement Ltd.
2	D-1(P)	10000	150'5"X66.45'0"	
<b>Total Area in sq. ft.</b>		<b>1518918.00</b>		
<b>Total Area in Acre</b>		<b>34.87</b>		



Vacant Land -

				
Amin BIADA, Bhagalpur	Area-In-Charge I.A. Bhediadangi	Asstt. Development officer BIADA, Bhagalpur	Development officer BIADA, Bhagalpur	Draftsman BIADA